



To:

EQUIPMENT BUYERS

From: Quicquaro & Assoc., LLC
Joseph Quicquaro, CSA, CFSP
T/A Restaurant Values
5983 Poplar Ridge Drive
Westerville, OH 43081
(614)206-7234
(888)343-2981 (Contact)

ADVERTISED PRICE MAY NOT REFLECT FINAL PRICE. SPECIAL PRICING AVAILABLE FOR EMAIL OR CALL IN QUOTE
REQUESTS PRICES ARE PLUS FREIGHT AND SALES TAX WHERE APPLICABLE, AND ARE SUBJECT TO CHANGE
WITHOUT NOTICE. SPEC SHEETS AVAILABLE UPON REQUEST.

08/30/2024

HOSHIZAKI SPECIAL LIMITED TIME OFFER

Item # 1: ICE MAKER, CUBE-STYLE
Hoshizaki
Model KML-325MAJ

\$3,795.00 ea

Ice Maker, Cube-Style, 30"W,
air-cooled, self-contained
condenser, production capacity
up to 380 lb/24 hours at
70°/50° (300 lb AHRI certified
at 90°/70°), stainless steel
finish, crescent cube style, R-
404A refrigerant, 115v/60/1-
ph, 8.4 amps, NSF, UL



Item # 2: ICE MAKER, CUBE-STYLE
Hoshizaki
Model KML-500MAJ

\$4,350.00 ea

Ice Maker, Cube-Style, 30"W,
air-cooled, self-contained
condenser, production capacity
up to 442 lb/24 hours at
70°/50° (400 lb AHRI certified
at 90°/70°), stainless steel
finish, crescent cube style, R-
404A refrigerant, 115v/60/1-
ph, 7.6 amps, NSF, UL (Model
Replaced By KMD-505MAJ)



Item # 3: ICE MAKER, CUBE-STYLE
Hoshizaki
Model KML-700MAJ

\$5,125.00 ea

Ice Maker, Cube-Style, 30"W,
air-cooled, self-contained
condenser, production capacity
up to 662 lb/24 hours at 70°/50°
(610 lb AHRI certified at
90°/70°), stainless steel finish,
crescent cube style, R-404A
refrigerant, 115v/60/1-ph, 14.9
amps, NSF, UL, ENERGY STAR®
(Model Replaced By KMD-
705MAJ)



Item # 4: ICE MAKER, CUBE-STYLE
Hoshizaki
Model KMD-860MAJ

\$6,535.00 ea

Ice Maker, Cube-Style, 30"W,
air-cooled, self-contained
condenser, production capacity
up to 855 lb/24 hours at
70°/50° (665 lb AHRI certified
at 90°/70°), stainless steel
finish, crescent cube style, R-
404A refrigerant, 208-
230v/60/1-ph, 9.9 amps, NSF,
UL



Item # 5: ICE MAKER, CUBE-STYLE
Hoshizaki
Model KM-901MAJ

\$6,640.00 ea

Ice Maker, Cube-Style, 30"W, air-cooled, self-contained condenser, production capacity up to 905 lb/24 hours at 70°/50° (753 lb AHRI certified at 90°/70°), crescent cube style, stainless steel exterior, R-404A refrigerant, 208-230v/60/1-ph, 13.0 amps, NSF, UL



Item # 6: ICE MAKER, CUBE-STYLE
Hoshizaki
Model KM-350MAJ

\$4,020.00 ea

Ice Maker, Cube-Style, 22"W, air-cooled, self-contained condenser, production capacity up to 489 lb/24 hours at 70°/50° (393 lb AHRI certified at 90°/70°), crescent cube style, stainless steel finish, R-404A refrigerant, 115v/60/1-ph, 9.05 amps, NSF, UL, ENERGY STAR®



Item # 7: ICE MAKER, CUBE-STYLE
Hoshizaki
Model KMD-410MAJ

\$3,930.00 ea

Ice Maker, Cube-Style, 22"W, air-cooled, self-contained condenser, production capacity up to 418 lb/24 hours at 70°/50° (351 lb AHRI certified at 90°/70°), stainless steel finish, crescent cube style, R-404A refrigerant, 115v/60/1-ph, 8.2 amps, NSF, cETLus, UL



Item # 8: ICE BIN FOR ICE MACHINES
Hoshizaki
Model B-250SF

\$1,340.00 ea

Ice Bin, 30"W, top-hinged front-opening door, 250 lb ice storage capacity, for top-mounted ice maker, stainless steel finish, painted legs included, protected with H-GUARD Plus Antimicrobial Agent, ETL-Sanitation



Item # 9: ICE BIN FOR ICE MACHINES
Hoshizaki
Model B-300SF

\$1,375.00 ea

Ice Bin, 22"W, top-hinged front-opening door, 300-lb ice storage capacity, for top-mounted ice maker, stainless steel exterior, 6" painted flange legs included, protected with H-GUARD Plus Antimicrobial Agent, ETL, ETL-Sanitation



Item # 10: ICE BIN FOR ICE MACHINES
Hoshizaki
Model B-500SF

\$1,530.00 ea

Ice Bin, 30"W, top-hinged front-opening door, 500-lb ice storage capacity, for top-mounted ice maker, stainless steel exterior, painted legs included, protected with H-GUARD Plus Antimicrobial Agent, ETL, ETL-Sanitation



Item # 11: ICE BIN FOR ICE MACHINES
Hoshizaki
Model BD-500SF

\$1,590.00 ea

Ice Bin, 30"W, top-hinged front-opening door, 500-lb ice storage capacity, for top-mounted ice maker, stainless steel exterior, painted legs included, protected with H-GUARD Plus Antimicrobial Agent, fits 24" - 24-1/2" deep ice machine without top kit extension, ETL, ETL-Sanitation



Item # 12: ICE BIN FOR ICE MACHINES
Hoshizaki
Model B-700SF

\$1,895.00 ea

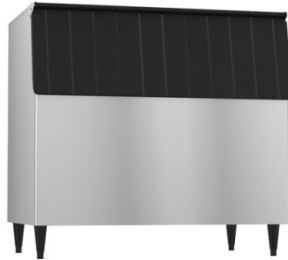
Ice Bin, 44"W, top-hinged front-opening door, 700-lb ice storage capacity, for top-mounted ice makers, stainless steel exterior, painted legs included, protected with H-GUARD Plus Antimicrobial Agent, ETL, ETL-Sanitation



Item # 13: ICE BIN FOR ICE MACHINES
Hoshizaki
Model B-800SF

\$2,045.00 ea

Ice Bin, 48"W, top-hinged front-opening door, 800-lb ice storage capacity, for top-mounted ice makers, stainless steel exterior, painted legs included, protected with H-GUARD Plus Antimicrobial Agent, ETL, ETL-Sanitation



Item # 14: ICE BIN FOR ICE MACHINES
Hoshizaki
Model B-900SF

\$2,150.00 ea

Ice Bin, 52"W, top-hinged front-opening door, 900-lb ice storage capacity, for top-mounted ice makers, stainless steel exterior, painted legs included, protected with H-GUARD Plus Antimicrobial Agent, ETL, ETL-Sanitation



Item # 15: ICE BIN FOR ICE MACHINES
Hoshizaki
Model B-1150SS

\$4,440.00 ea

Ice Bin, 48"W, hinged bottom door & top view windows, 1148-lb ice storage capacity, for top-mounted ice maker, stainless steel construction, universal top included, stainless steel legs, protected with H-GUARD Plus Antimicrobial Agent, ETL, ETL-Sanitation



Item # 16: ICE BIN FOR ICE MACHINES
Hoshizaki
Model B-1300SS

\$4,595.00 ea

Ice Bin, 48"W, hinged bottom door & top view windows, 1304-lb ice storage capacity, for top-mounted ice maker, stainless steel construction, universal top included, stainless steel legs, protected with H-GUARD Plus Antimicrobial Agent, ETL, ETL-Sanitation



Item # 17: ICE BIN FOR ICE MACHINES
Hoshizaki
Model B-1500SS

\$5,010.00 ea

Ice Bin, 60"W, hinged bottom door & top view windows, 1500-lb ice storage capacity, for top-mounted ice maker, stainless steel construction, universal top included, stainless steel legs, protected with H-GUARD Plus Antimicrobial Agent, ETL, ETL-Sanitation



Item # 18: ICE BIN FOR ICE MACHINES
Hoshizaki
Model B-1650SS

\$5,175.00 ea

Ice Bin, 60"W, hinged bottom door & top view windows, 1605-lb ice storage capacity, for top-mounted ice maker, stainless steel construction, universal top included, stainless steel legs, protected with H-GUARD Plus Antimicrobial Agent, ETL, ETL-Sanitation



Item # 19: WATER FILTRATION SYSTEM, FOR ICE MACHINES
Hoshizaki
Model H9320-51

\$285.00 ea

Water Filtration System, single configuration, 18.4" H (manifold & cartridge)



Item # 20: WATER FILTRATION SYSTEM, FOR ICE MACHINES
Hoshizaki
Model HDI-11

Water Filter Assembly, IsoNet®, 1.5 gpm, gradient-density depth filtration, Class 1 T & O, class 1 filtration, 10" drop in cartridge, for single (Refer to factory website for distributor locator) (contact factory for price)



Item # 21: SANITIZING SYSTEM, WATER/ICE
Hoshizaki
Model HS-5283

\$510.00 ea

EcO3 Ice Ozone System, Standard Flow (1.3 GPM), ozone production treatment, reduces biofilm in the ice production path (interior, storage bin, dispenser, drains)



Item # 22: ICE DISPENSER
Hoshizaki
Model DB-200H

\$4,490.00 ea

Ice Dispenser, 30"W, 200-lb. built-in storage capacity, accommodates KM-340/350, KM-515/520, KM-650/660 or KML series cubers, ABS molded front, vinyl covered steel side panels, 6" painted legs, ice dispensing area is ADA compliant, 60 watts, 115v/60/1-ph, 1.4 amps, cULus, ETL-Sanitation



Item # 23: ICE DISPENSER
Hoshizaki
Model DM-200B

\$4,645.00 ea

Ice & Water Dispenser, 30"W, counter model, air-cooled, 200-lb. ice capacity, accommodates KML Series ice machines or manual fill, dispenses 7-1/2 lb. ice/minute, auger agitator dispenses individual cubes, stainless steel exterior, 115-120v/60/1-ph, 4.1 amps, NEMA 5-15P, cULus, ETL-Sanitation



Item # 24: MEGA TOP SANDWICH / SALAD PREPARATION REFRIGERATOR

Hoshizaki
Model SR27B-12M

\$3,375.00 ea

Steelheart Series Mega Top Refrigerator, reach-in, one-section, 27"W, 7.21 cu. ft., self-contained rear mounted refrigeration system, (1) solid hinged door, (1) adjustable shelf, provided with (12) 1/6 size pans 4" deep, 6" maximum pan depth (top rail), 10" D x 1/2" thick white polyethylene cutting board & a full set of adapter bars, stainless steel interior, stainless steel exterior front, sides & hinged top cover, (4) 6" casters (2 with brakes), R290 Hydrocarbon refrigerant, 1/5 HP, NEMA 5-15P, cETLus, ETL-Sanitation



Item # 25: MEGA TOP SANDWICH / SALAD PREPARATION REFRIGERATOR

Hoshizaki
Model SR36B-15M

\$4,272.00 ea

Steelheart Series Mega Top Refrigerator, reach-in, single section, 36"W, 9.9 cu. ft., self-contained rear mounted refrigeration system, (1) solid hinged door, (1) adjustable shelf, provided with (15) 1/6 pans 4" deep, 10" D x 1/2" thick white polyethylene cutting board & a full set of adapter bars, stainless steel interior, stainless steel exterior front, sides & top, (4) 6" casters (2 with brakes), R290 Hydrocarbon refrigerant, 1/6 HP, NEMA 5-15P, cETLus, ETL-Sanitation



Item # 26: MEGA TOP SANDWICH / SALAD PREPARATION REFRIGERATOR

Hoshizaki
Model SR48B-12M

\$4,908.00 ea

Steelheart Series Mega Top Refrigerator, reach-in, two-section, 48"W, 13.66 cu. ft., self-contained rear mounted refrigeration system, (2) solid hinged doors, (2) adjustable shelves, provided with (12) 1/6 pans 4" deep, 6" maximum pan depth (top rail), 10" D x 1/2" thick white polyethylene cutting board & a full set of adapter bars, stainless steel interior, stainless steel exterior front, sides & hinged top cover, (4) 6" casters (2 with brakes), hot gas condensate removal, R290 hydrocarbon refrigerant, 1/5 HP, cord, NEMA 5-15P, cETLus, ETL-Sanitation



Item # 27: MEGA TOP SANDWICH / SALAD PREPARATION REFRIGERATOR

Hoshizaki
Model SR48B-18M

\$4,860.00 ea

Steelheart Series Mega Top Refrigerator, reach-in, two-section, 48"W, 13.66 cu. ft., self-contained rear mounted refrigeration system, (2) solid hinged doors, (2) adjustable shelves, provided with (18) 1/6 pans 4" deep, 6" maximum pan depth (top rail), 10" D x 1/2" thick white polyethylene cutting board & a full set of adapter bars, stainless steel interior, stainless steel exterior front, sides & hinged top cover, (4) 6" casters (2 with brakes), hot gas condensate removal, R290 hydrocarbon refrigerant, 1/5 HP, cord, NEMA 5-15P, cETLus, ETL-Sanitation



Item # 28: MEGA TOP SANDWICH / SALAD PREPARATION REFRIGERATOR

Hoshizaki
Model SR60B-12M

\$5,540.00 ea

Steelheart Series Mega Top Refrigerator, reach-in, two-section, 60"W, 14.8 cu. ft., self-contained rear mounted refrigeration system, (2) solid hinged doors, (2) adjustable shelves, provided with (12) 1/6 pans 4" deep, 6" maximum pan depth (top rail), 10" D x 1/2" thick white polyethylene cutting board & a full set of adapter bars, stainless steel interior, stainless steel exterior front, sides & hinged top cover, (4) 6" casters (2 with brakes), hot gas condensate removal, R290 Hydrocarbon refrigerant, 1/3 HP, NEMA 5-15P, cETLus, ETL-Sanitation



Item # 29: MEGA TOP SANDWICH / SALAD PREPARATION REFRIGERATOR**Hoshizaki
Model SR60B-18M****\$5,629.00 ea**

Steelheart Series Mega Top Refrigerator, reach-in, two-section, 60"W, 14.8 cu. ft., self-contained rear mounted refrigeration system, (2) solid hinged doors, (2) adjustable shelves, provided with (18) 1/6 pans 4" deep, 6" maximum pan depth (top rail), 10" x 1/2" thick white polyethylene cutting board & a full set of adapter bars, stainless steel interior, stainless steel exterior front, sides & hinged top cover, (4) 6" casters (2 with brakes), hot gas condensate removal, R290 Hydrocarbon refrigerant, 1/3 HP, NEMA 5-15P, cETLus, ETL-Sanitation

**Item # 30: MEGA TOP SANDWICH / SALAD PREPARATION REFRIGERATOR****Hoshizaki
Model SR60B-24M****\$5,468.00 ea**

Steelheart Series Mega Top Refrigerator, reach-in, two-section, 60"W, 14.8 cu. ft., self-contained rear mounted refrigeration system, (2) solid hinged doors, (2) adjustable shelves, provided with (24) 1/6 pans 4" deep, 6" maximum pan depth (top rail), 10" D x 1/2" thick white polyethylene cutting board & a full set of adapter bars, stainless steel interior, stainless steel exterior front, sides & hinged top cover, (4) 6" casters (2 with brakes), hot gas condensate removal, R290 Hydrocarbon refrigerant, 1/3 HP, NEMA 5-15P, cETLus, ETL-Sanitation

**Item # 31: MEGA TOP SANDWICH / SALAD PREPARATION REFRIGERATOR****Hoshizaki
Model SR72B-18M****\$6,406.00 ea**

Steelheart Series Mega Top Refrigerator, reach-in, three-section, 72"W, 21.25 cu. ft., self-contained rear mounted refrigeration system, (3) solid hinged doors, (3) adjustable shelves, provided with (18) 1/6 pans 4" deep, 6" maximum pan depth (top rail), 10" D x 1/2" thick white polyethylene cutting board & a full set of adapter bars, stainless steel interior, stainless steel exterior front, sides & hinged top cover, (4) 6" casters (2 with brakes), R290 Hydrocarbon refrigerant, 1/3 HP, NEMA 5-15P, cETLus, ETL-Sanitation

**Item # 32: MEGA TOP SANDWICH / SALAD PREPARATION REFRIGERATOR****Hoshizaki
Model SR72B-24M****\$6,511.00 ea**

Steelheart Series Mega Top Refrigerator, reach-in, three-section, 72"W, 21.25 cu. ft., self-contained rear mounted refrigeration system, (3) solid hinged doors, (3) adjustable shelves, provided with (24) 1/6 pans 4" deep, 6" maximum pan depth (top rail), 10" D x 1/2" thick white polyethylene cutting board & a full set of adapter bars, stainless steel interior, stainless steel exterior front, sides & hinged top cover, (4) 6" casters (2 with brakes), R290 Hydrocarbon refrigerant, 1/3 HP, NEMA 5-15P, cETLus, ETL-Sanitation

**Item # 33: MEGA TOP SANDWICH / SALAD PREPARATION REFRIGERATOR****Hoshizaki
Model SR72B-30M****\$6,217.00 ea**

Steelheart Series Mega Top Refrigerator, reach-in, three-section, 72"W, 21.25 cu. ft., self-contained rear mounted refrigeration system, (3) solid hinged doors, (3) adjustable shelves, provided with (30) 1/6 pans 4" deep, 6" maximum pan depth (top rail), 10" D x 1/2" thick white polyethylene cutting board & a full set of adapter bars, stainless steel interior, stainless steel exterior front, sides & hinged top cover, (4) 6" casters (2 with brakes), R290 Hydrocarbon refrigerant, 1/3 HP, NEMA 5-15P, cETLus, ETL-Sanitation

**Item # 34: REACH-IN FREEZER****Hoshizaki
Model EF1A-FS****\$2,400.00 ea**

Economy Series Freezer, reach-in, one-section, 17.74 cu. ft., bottom mounted self-contained refrigeration, (3) adjustable epoxy coated shelves, (1) full-height solid right hinged door with lock, digital temperature display/controls, temperature alarms, LED interior lighting, stainless steel interior floor, aluminum interior sides, rear, & top, stainless steel front, gray painted steel exterior sides, top & rear, (4) 4" casters (2 with brakes), R290 Hydrocarbon refrigerant, 1/3 HP, NEMA 5-15P, UL EPH Classified, cULus, ENERGY STAR®

**Item # 35: REACH-IN FREEZER****Hoshizaki
Model EF2A-FS****\$3,600.00 ea**

Economy Series Freezer, reach-in, two-section, 38.54 cu. ft., bottom mounted self-contained refrigeration, (6) adjustable epoxy coated shelves, (2) full-height solid hinged doors with locks, digital temperature display/controls, temperature alarms, LED interior lighting, stainless steel interior floor, aluminum interior sides, rear, & top, stainless steel front, gray painted steel exterior sides, top & rear, (6) 4" casters (2 with brakes), R290 Hydrocarbon refrigerant, 1/2 HP, NEMA 5-15P, UL EPH Classified, cULus, ENERGY STAR®

**Item # 36: REACH-IN FREEZER****Hoshizaki
Model F1A-HS****\$5,613.00 ea**

Steelheart Series Freezer, reach-in, one-section, 23.1 cu. ft., self-contained refrigeration system, solid state digital controller with temperature alarms & LED display, stainless steel exterior front & sides, stainless steel interior, standard depth, (2) half height solid right hinged doors, with (3) 21-1/4" x 26" standard shelves, (4) 4" heavy duty casters (2 with brakes), R290 Hydrocarbon refrigerant, 3/4 HP, NEMA 5-15P, cETLus, ETL-Sanitation



Item # 37: REACH-IN FREEZER
Hoshizaki
Model F2A-FS

\$7,158.00 ea

Steelheart Series Freezer, reach-in, two-section, 50.37 cu. ft., top mounted self-contained refrigeration system, (6) epoxy-coated wire shelves, (2) full-height solid hinged doors, digital temperature display/controls, audible/visual alarms, LED interior lighting, stainless steel interior, stainless steel exterior front & sides, (4) 4" heavy duty casters (2 with brakes), R290 Hydrocarbon refrigerant, 1 HP, NEMA 5-15P, cETLus, ETL-Sanitation



Item # 38: REACH-IN REFRIGERATOR
Hoshizaki
Model ER1A-FS

\$2,000.00 ea

Economy Series Refrigerator, reach-in, one-section, 17.8 cu. ft., bottom mounted self-contained refrigeration, (3) adjustable epoxy coated shelves, (1) full-height solid right hinged door with lock, digital temperature display/controls, temperature alarms, LED interior lighting, stainless steel interior floor, aluminum interior sides, rear, & top, stainless steel front, gray painted steel exterior sides, top & rear, (4) 4" casters (2 with brakes), R290 Hydrocarbon refrigerant, 1/5 HP, NEMA 5-15P, UL EPH Classified, cULus, ENERGY STAR®



Item # 39: REACH-IN REFRIGERATOR
Hoshizaki
Model ER2A-FS

\$3,100.00 ea

Economy Series Refrigerator, reach-in, two-section, 38.61 cu. ft., bottom mounted self-contained refrigeration, (6) adjustable epoxy coated shelves, (2) full-height solid hinged doors with locks, digital temperature display/controls, temperature alarms, LED interior lighting, stainless steel interior floor, aluminum interior sides, rear, & top, stainless steel front, gray painted steel exterior sides, top & rear, (6) 4" casters (2 with brakes), R290 Hydrocarbon refrigerant, 1/3 HP, NEMA 5-15P, UL EPH Classified, cULus, ENERGY STAR®



Item # 40: REACH-IN REFRIGERATOR
Hoshizaki
Model R1A-FS

\$4,252.00 ea

Steelheart Series Refrigerator, reach-in, one-section, 23.1 cu. ft., top mounted self-contained refrigeration system, (3) epoxy coated wire shelves, (1) full-height solid right hinged door, digital temperature display/controls, LED interior lighting, stainless steel exterior front & sides, stainless steel interior, (4) 4" heavy duty casters (2 with brakes), R290 Hydrocarbon refrigerant, 1/4 HP, NEMA 5-15P, cETLus, ETL-Sanitation, ENERGY STAR®



Item # 41: REACH-IN REFRIGERATOR
Hoshizaki
Model R2A-FS

\$5,665.00 ea

Steelheart Series Refrigerator, reach-in, two-section, 50.37 cu. ft., top mounted self-contained refrigeration, (6) epoxy coated wire shelves, (2) full height solid hinged doors, digital temperature display/controls, LED interior lighting, stainless steel exterior front & sides, stainless steel interior, (4) 4" heavy duty casters (2 with brakes), R290 Hydrocarbon refrigerant, 1/2 HP, NEMA 5-15P, cETLus, ETL-Sanitation



Standard Condition of Sale:

Freight, applicable sales tax, services (set up, electric, plumbing), equipment accessories, and manufacturer options are not included unless stated otherwise in this proposal. Freight surcharge may apply to various products or ship to locations that are designated as free freight. Accessibility or adaptability to fit or place equipment, or additional labor and material, not herein stated is the responsibility of the customer or charged extra. Standard manufacturer warranties apply. There is no other warranty expressed or implied. Fulfillment of warranty terms and conditions are not the responsibility of Quicquaro & Associates, LLC, and will be the sole responsibility of the manufacturer or used equipment source. Customer is responsible to verify warranty status for pre-owned equipment sold. The customer will be required to contact the manufacturer, used equipment source, or authorized service agent directly in order to obtain warranty service. When submitted as a quotation, prices are based on current factory price list and quotes. Price are subject to change and price protection deadlines may vary between vendors and manufacturers. In particular, we cannot guarantee pricing for a specific time period. Please confirm your pricing before placing your purchase order. **IMPORTANT!** By placing this order, buyer confirms that they have read and agree to Quicquaro & Associates, LLC, TA Restaurant Values Terms and Conditions of Sale on-line and herein stated, and that the product specifications and order details have been reviewed and confirmed to be correct for the buyer's intended location, application, and use. The customer is responsible to verify that all equipment specifications and installation details conform to local code requirements. Please note, Quicquaro & Associates, LLC, TA Restaurant Values is not responsible for shipping delays, factory or vendor specification changes or disclaimers. Orders will be placed to ship ASAP or date

requested. Cancellation, Refunds and Returns - Orders are final and cannot be canceled. At our discretion, cancellations, refunds, and returns may be permitted, depending on the return policy of the original manufacturer or vendor source. A 3.5% credit card fee will be charged for card purchases and refunds. Custom imprinted or special-order items are NOT returnable. Authorized returns will be subject to processing fees, manufacturer and Quicquaro & Associates, LLC restocking and cancellation charges and return freight charges. Minimum restocking charge, 25% plus other costs. Returned item must include documentation, warranty cards, cables etc., and be in new condition, not used and in original carton. Returns must have prior written authorization. Return request must be submitted in writing within 3 days from receipt of merchandise. Some manufacturers will not accept any returns. A written Return Authorization is required. We reserve the right to refuse credits on damaged, misused or non-resalable items. Prepayment required. We accept all major credit cards, checks, and wire transfers. Leasing available. Request or download application from website. Please note company policy requires a five-business day hold on all checks. Customer agrees to terms & conditions as stated on company website RestaurantValues.net. Sales Tax will not be included for out of state shipments. Certain manufacturers for certain states will require sales tax to be charged at time of sale. Use tax for out of state shipments will be the responsibility of the customer to pay. Unless stated otherwise, prices are plus freight, drop ship to customer location. Receive, unload, unpack, and installation by others or separate agreement. All refrigeration components must be installed by a certified refrigeration contractor, and one must be present at refrigeration unit startup. Failure to utilize certified refrigeration contract will affect applicable warranties. Unpack order and inspect for damage. Your signature on the carriers documentation confirms that you have received your product in good condition without any shortage or damage, and no claim can be filed. If your order is found to be damaged, you must mark all copies of the carriers documents as DAMAGED and REFUSE the order and call customer service ASAP. If you would like to receive at risk, mark all copies of the carrier delivery receipt POSSIBLE HIDDEN DAMAGE and save all packaging. You will need to file a damage claim directly with the carrier. **Important Sales Tax Information** - We do not collect sales or use taxes in all states. For states imposing sales or use taxes, your purchase is subject to use tax unless it is specifically exempt from taxation. Your purchase is not exempt merely because it is made over the Internet or by other remote means. Many states require purchasers to file a sales/use tax return at the end of the year reporting all of the taxable purchases that were not taxed and to pay tax on those purchases. Details of how to file these returns may be found at the websites of your respective taxing authorities. If a manufacturer or vendor source should require that sales tax be collected after the sale is transacted, customer agrees to pay the sales tax required. NOTE: Buyer agrees to accept pre-owned used equipment that may have scratches, dents and other imperfections including missing accessories. Quicquaro & Associates, LLC deals with reputable refurbisher and liquidators.